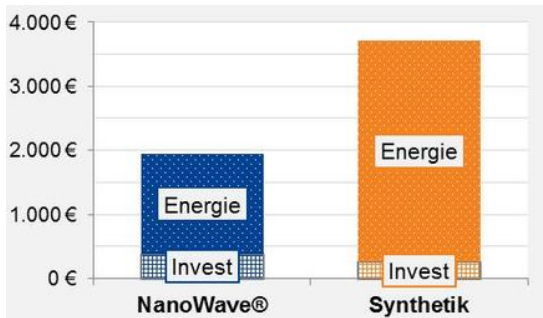


FILTER ELEMENTS AND FILTER UNITS

Save 50 % energy costs by using the correct filters



*Gegenüberstellung der Invest- und Energiekosten
Comparison investment and energy costs*

Fans in room air conditioning systems (AHU systems) require electrical energy, not least to overcome the flow resistance of integrated particulate air filters.

It should be possible to save energy by using energy-efficient filters which offer less resistance than standard filters. Or that's the theory.

To verify this in practice, TROX carried out a yearlong test to measure and compare.

COMPACT, INTELLIGENT, RELIABLE

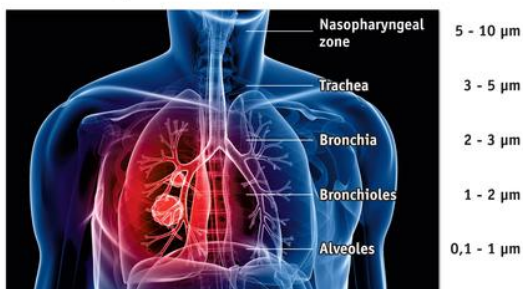


DIGITAL PRESSURE MONITOR MD-DPC WITH SIGNAL OUTPUT

This completely redesigned digital pressure monitor for the display and monitoring of differential pressures in non-aggressive gases is the latest addition to our filter product portfolio.

WHAT IS NEW ABOUT THE NEW ISO 16890?

Health aspects



ADVERSE HEALTH EFFECTS OF FINE DUST IN THE OUTDOOR AIR.

Adverse health effects of fine dust in the outdoor air. A report by the German Environment Agency of 4 November 2016 states that particulate matter pollution does indeed impair people's health. In the years from 2007 to 2014, an average of 45,300 premature deaths are attributed to the fine dust concentration in the outdoor air in Germany each year. Therefore, effective filter systems in room air conditioning systems that separate the fine dust from the outdoor air are an important contribution for maintaining good health.



FILTER TECHNOLOGY FROM A TO Z



A SUITABLE FILTER SOLUTION FOR EVERY REQUIREMENT

With an extensive and diverse filter portfolio, TROX has suitable filter units and filter elements for the most varied installation situations and fields of application.

Installed in walls, ducts, ceilings or air handling units, whether in schools, production facilities or pharmaceutical laboratories, TROX filters are used all over the world.

They satisfy the most stringent quality requirements, comply with international standards and impress with minimal pressure losses, hence ensuring long service lives.

Read more in our brochure.

LCC ENERGY FILTER

SIMPLE. SUSTAINABLE. SAVINGS.

The new TROX energy costs calculator for filters lets you find out quickly and easily what energy costs various filters incur over time. The biggest saving potential in terms of the life cycle costs arises from the energy costs where, depending on your choice of filter, you could save over 60%.

IT COULDN'T BE EASIER – SUSTAINABLY SAVE ON COSTS IN THREE STEPS

1. Enter the volume flow rate.
2. The result shows you the **annual energy costs in euros per energy efficiency class**.
3. Contact us.

The filter energy cost calculator from TROX gives you initial information regarding energy costs when selecting filters. We will be happy to propose an individual quote for your room air conditioning system.

Volume flow rate

m³/h Eurovent
adoption: 3400 m³/h

Operating time:

h/a Eurovent
adoption: 6000 h/a

Electricity price:

€/kWh

1. Filter stage:

2. Filter stage:

Calculate

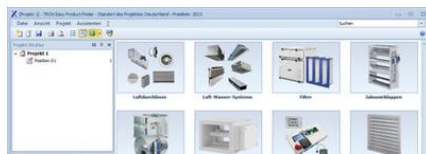
Fundamentals of the LCC energy filter
Specialist article: Energy-efficient room air hygiene

Contact

TROX SERVICES



PRODUCTSEARCH A-Z
Find out quickly and simply.



TROX EASY PRODUCT FINDER
Fast. Reliable. Innovative.



TOUR DE COMPETENCE
Competence - exciting staged.